

## OPTIONS BOOKLET



# Options FOR YEAR 10

2022-2024



Chew Valley School

Learn

Grow

Achieve

Courses 2022 - 2024

# The Options Process



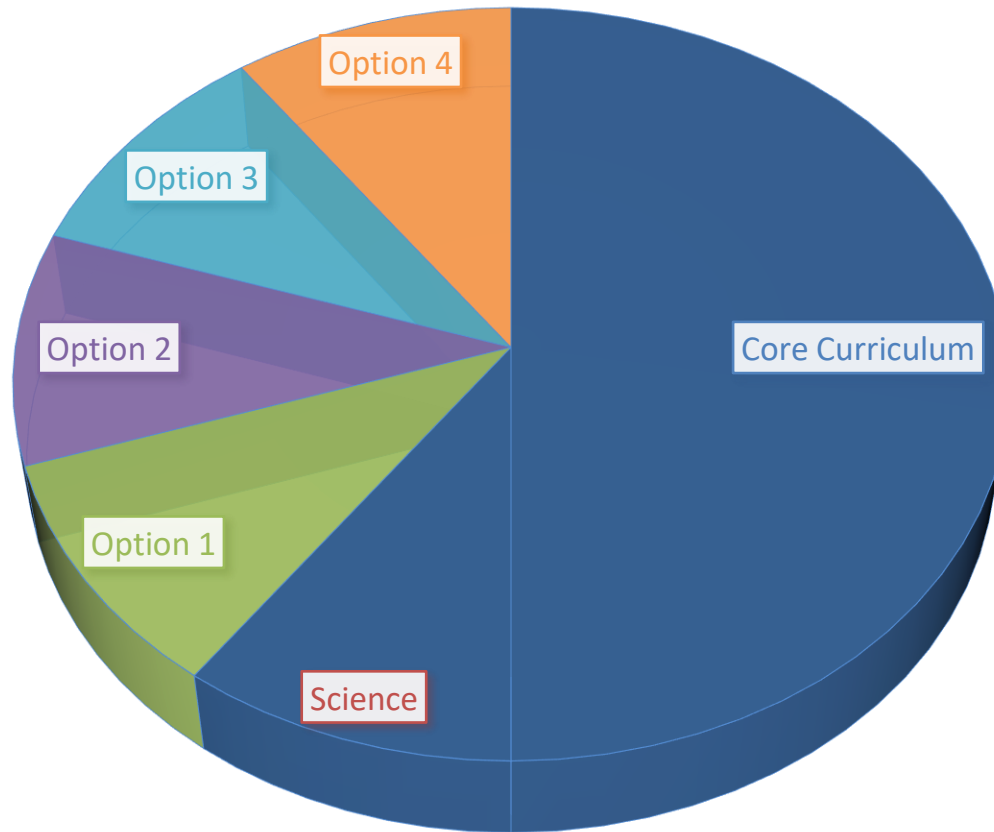
**Student Choice**

**Increased  
Motivation**

**More Success  
at GCSE**

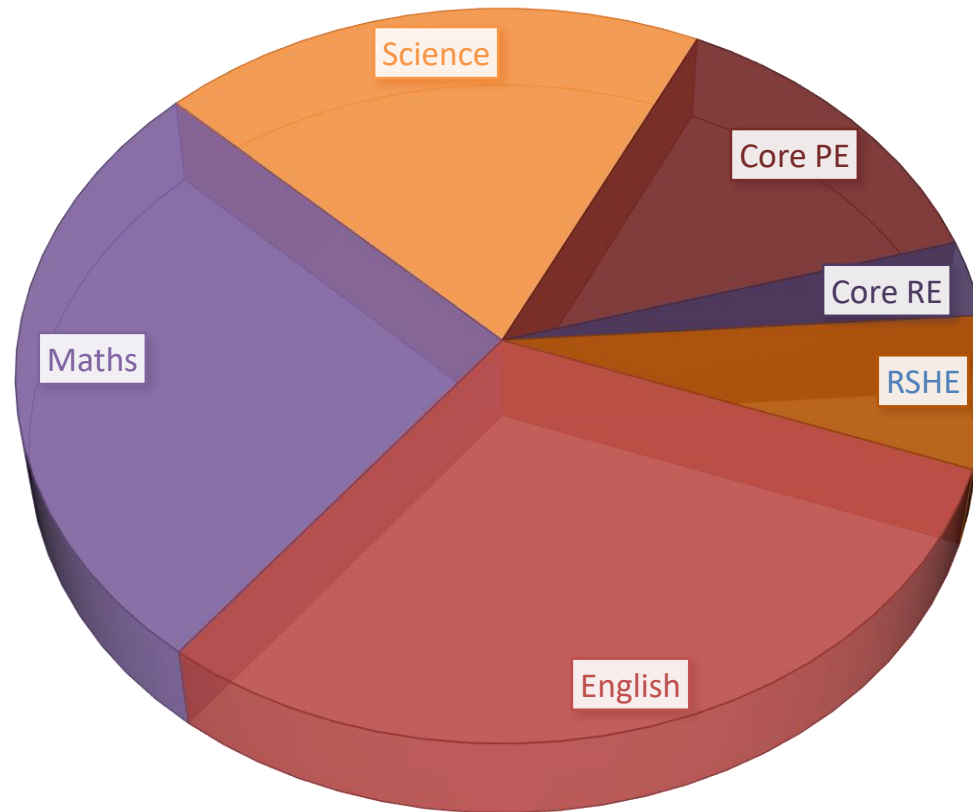
# The Key Stage 4 Curriculum

## CURRICULUM STRUCTURE



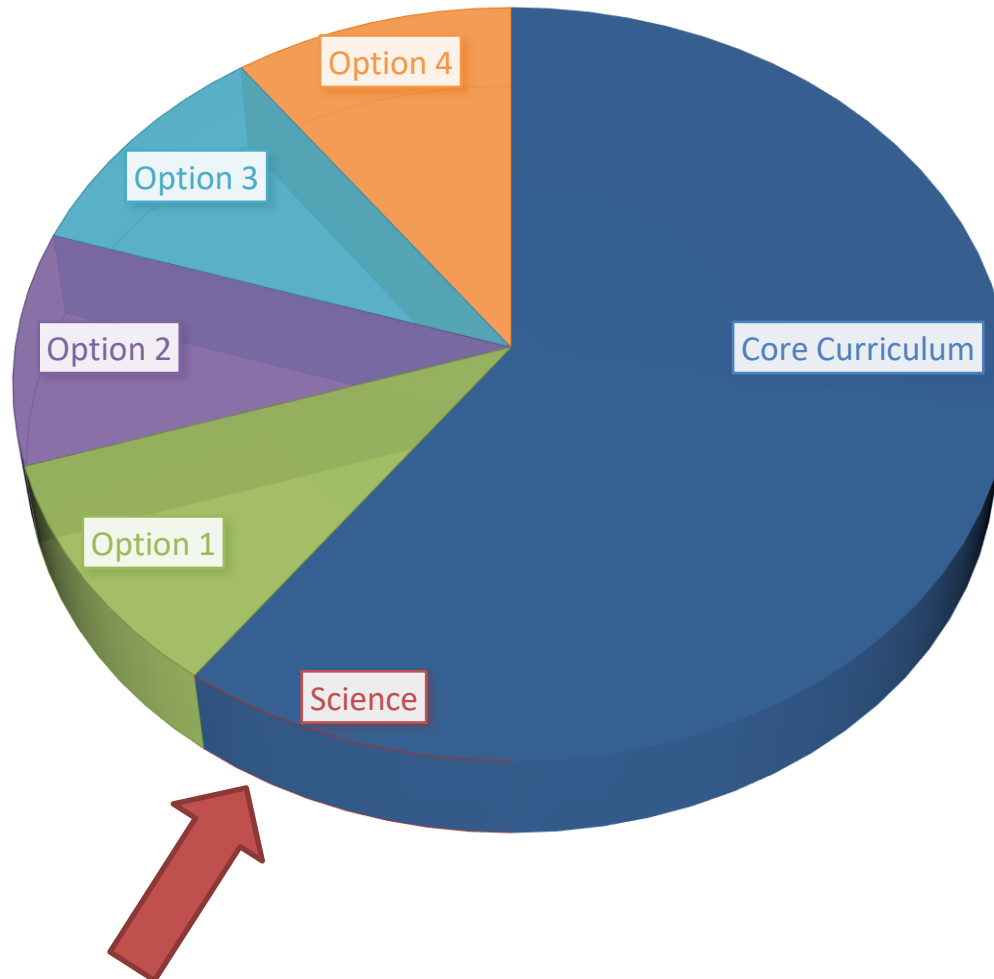
# Core Curriculum

## CVS CORE CURRICULUM



# The Key Stage 4 Curriculum

## CURRICULUM STRUCTURE



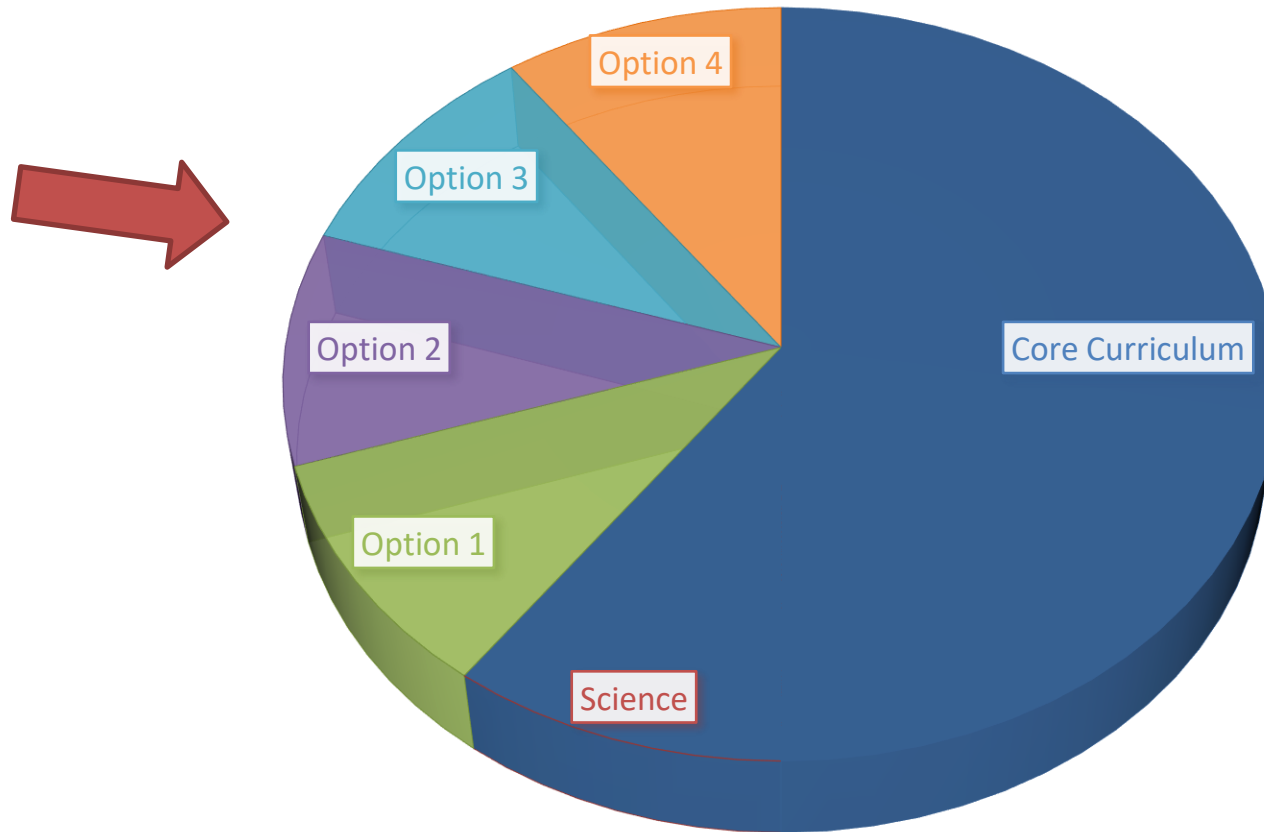
# Science

- **Double Science GCSE**
  - Combined Science to make 2 GCSEs
- **Triple Science**
  - 3 separate GCSEs: Biology, Physics and Chemistry
- Students are placed on one of these courses dependent on their performance in Year 9 Science assessments
- We decide whether to have 1 or 2 triple groups based on the profile of the year group



# The Key Stage 4 Curriculum

## CURRICULUM STRUCTURE



# Options

- A range of GCSE, and Vocational courses
- **Four options**







# OPTIONS BOOKLET



**Chew Valley School**

Learn

Grow

Achieve

Courses 2022 - 2024



# Subjects on offer

OPTIONS BOOKLET



## **Specialising:**

Dance, Drama, Geography, History, ICT, Languages, Music, PE/Sport, RS, Technology subjects...

## **“New” Subjects:**

Business Studies, Health and Social Care, Computer Science, Construction, Media Studies, imedia.



**Chew Valley School**

Learn      Grow      Achieve

Courses 2022 - 2024



# Qualifications on offer

- **GCSE**
  - Graded from 9-1
- **Cambridge National / BTEC**
  - Awarded Distinction, Merit, or Pass
  - “Applied” or work-based learning
  - Available in Sport, Business, and Construction



## CORE CURRICULUM GCSE ENGLISH LANGUAGE

### What do you study?

- A course leading to a GCSE in English Language.
- A range of writing skills for fiction and non-fiction forms and purposes.
- Reading skills linked to a range of literary and non-fiction texts.
- Writing skills for a variety of different purposes and audiences.

### Why study English?

- To develop crucial communication skills as a speaker and writer.
- To develop your reading skills, helping you not only to read more difficult texts but also to notice inference, implication and make deductions about what you read.
- To develop skills in analysing and thinking.
- To develop your ability to form opinions about the world and to consider a range of ideas.
- To learn about Literature and Media texts and what they show about the world around you.

*GCSE English is a vital qualification for most future jobs, 6<sup>th</sup> Form or further education, as evidence that you can read, write, speak, listen and think well!*

### How is the course assessed?

Two written exams at the end of Year 11:

	Written Examinations
Reading	50%
Writing	50%

Exam 1 (1 hour 45 minutes):

- **Section A: Reading:** Answer four increasingly challenging questions on an extract from literary fiction. (40 marks in total)
- **Section B: Writing:** One extended writing task. (40 marks)

Exam 2 (1 hour 45 minutes):

- **Section A: Reading:** Answer four increasingly challenging questions on two non-fiction texts, some of which require you to compare them. (40 marks in total)
- **Section B: Writing:** One extended writing task (40 marks)

There will be a separate assessment of your speaking and listening skills reported with your examination results, for which you will complete the work in class.  
This GCSE will be graded 1-9, with 9 being the highest.

### Who is responsible for the course?

Mr G James - Head of English



# Options Pattern

## Option A and B

- A Humanities subject, Computer Science or a Language:
  - Computer Science
  - French
  - Geography
  - History
  - Spanish
- By Invitation: Double Option - BTEC Construction

## Options C and D

- Free choice
- Health and Social Care
- PE/ National PE
- Performing Arts
- DT
- Can add further Humanities subjects or Languages
- Adds breadth to your study



# Things to consider for students

## Do consider:

- What do I enjoy?
- What am I good at?
- What skills will I develop?
- What to I want to do post-16?
  - Sixth form?
  - College?
  - Apprenticeship/employment?
- Choose a good range of subjects

## Do not consider:

- Choosing subjects just to be with friends
- Choosing subjects because “I like/don’t like the teacher”
- Choosing subjects “because you ought to”



# Things to consider - parents

- Read the latest subject report carefully
- Discuss progress and suitability with subject staff at parents' evening, next week
- Discuss with your children what they *want* to do, and whether this will keep the right options open post-16
- Use [www.careerpilot.org.uk](http://www.careerpilot.org.uk) or [www.unifrog.org](http://www.unifrog.org) to look at future career paths
- Consider the skills that different subjects give
- Aim for breadth and variety



# The English Baccalaureate

- Represents breadth and strength in academic achievement
- Awarded to any student gaining 9-5 in:
  - English Language
  - Two Sciences (including Computer Science)
  - Mathematics
  - History or Geography
  - A Language



# The Importance of a Language



<https://www.oecd.org/pisa/foreign-language/opens-doors.pdf>

- Research Paper – 2018 PISA data
- Languages lead to better job opportunities
- Languages speakers are more mobile geographically
- Can earn higher salaries
- Languages learners are more creative and better at solving complex problems
- Learning a language can improve attention and mental alertness in adults
- Can help with first language literacy



## OPTIONS PATTERN 2022-2024 CHEW VALLEY SCHOOL OPTIONS

<b>Core</b>	<b>English Language*</b> , <b>English Literature*</b> , <b>Mathematics*</b> , <b>Science*</b> , PE, RE, RSHE, Work Experience
-------------	---

Choose two choices from Option A & B :

A & B	<div style="display: flex; justify-content: space-around;"> <div style="text-align: center;"> <b>Computer Science*</b> </div> <div style="text-align: center;"> <b>French*</b> <b>History*</b> </div> <div style="text-align: center;"> <b>Geography*</b> <b>Spanish*</b> </div> </div>	<div style="display: flex; align-items: center;"> <div style="writing-mode: vertical-rl; transform: rotate(180deg); font-size: small; padding-right: 5px;">Invite only</div> <div style="border: 1px solid black; border-radius: 10px; padding: 10px; text-align: center; width: 100px;"> <b>Construction</b> </div> </div>
-------	---	---

And two subjects from the following options:

C & D	<div style="display: flex; justify-content: space-between;"> <div style="width: 45%;"> Art Business Studies <b>Computer Science*</b> Construction (Double Option) Dance Design Technology Drama Food &amp; Nutrition <b>French*</b> <b>Geography*</b> </div> <div style="width: 45%;"> Health and Social Care <b>History*</b> ICT - iMedia Media Studies Music PE Religious Studies <b>Spanish*</b> </div> </div>
-------	---

\*Subjects marked in **bold** with an asterisk represent part of the English Baccalaureate.

The government is increasingly requiring students to achieve the English Baccalaureate. Whilst not compulsory, it is highly advisable for students, especially if considering going on to university education that students should choose a foreign language and either Geography or History to be eligible to achieve the English Baccalaureate.

### **Double Option**

Construction is a Double Option subject taken in both Options A and B.

### **PE**

Two PE courses are available – a GCSE and a National Course. Students are asked to opt for PE and staff will then allocate students onto the correct course based on suitability.

**Prohibited combinations** - ~~You cannot~~ take the same subject twice.

**Reserve Choice** - We ask all students to make a reserve choice. This must be something they are willing to study.

Please complete the [Options Form](#) by **Wednesday 26<sup>th</sup> January 2022**.

# Options Viability

- We will make every effort to meet students' first option choices
- Where this is not possible, we will use the reserve choice
- On occasions some options do not recruit a viable group, therefore you must be willing to take your reserve option
- Students cannot take the same subject twice!
- Additionally, once courses have been started in September we do not allow changes. Before this students can change but restrictions will be in place due to the groupings of subjects into “blocks”.



# Important Dates

- Monday 10<sup>th</sup> January:  
Options Assembly
- Tuesday 11<sup>th</sup> January:  
Options Evening
- Wednesday 19<sup>th</sup> January:  
Subject Evening – online
- Wednesday 26<sup>th</sup> January:  
Final deadline for completing options online



A calendar for January 2022. The days of the week are listed at the top: Monday, Tuesday, Wednesday, Thursday, Friday, Saturday, Sunday. The dates are arranged in a grid. Key dates are highlighted: 10th (Monday), 11th (Tuesday), 19th (Wednesday), and 26th (Wednesday). The 10th, 11th, and 19th are circled in blue. The 26th is highlighted with a red square. The dates 1st through 6th are in red, and the dates 7th through 9th are in red. The dates 12th through 18th are in black. The dates 19th through 25th are in black. The dates 26th through 31st are in black. The date 26th is highlighted with a red square. The date 26th is highlighted with a red square.

Monday	Tuesday	Wednesday	Thursday	Friday	Saturday	Sunday
27	28	29	30	31	1	2
3	4	5	6	7	8	9
10	11	12	13	14	15	16
17	18	19	20	21	22	23
24	25	26	27	28	29	30
31	1	2	3	4	5	6

What's The Date Today Com



# Sources of advice

- Your Parents / Friends
- Students in Key Stage 4
- Your teachers, or Heads of Department
- Aspire teacher
- Tutor & Head of House
- Careers Team – Mr Hammett
- [www.careerpilot.org.uk](http://www.careerpilot.org.uk) or [www.unifrog.org](http://www.unifrog.org)
- Mrs Black and the Learning Support team



# What is Labour Market Intelligence?

- Information into the structure of employment and the jobs available in a given area
- Looks at what employers there are, and what sectors they are in.
- What type of jobs people are doing
- What skills are required
- How employment in an area may change



# Labour Market Information

\*LMI obtained from the Office for National Statistics and Gov.uk. Poster last updated August 2020

\*\* Data used in this poster covers the period April - June 2020 and includes furloughed workers

National  
Careers  
Service

## West of England LEP

Bristol, North Somerset, South Gloucestershire, Bath & North East Somerset



### Employment

UK - 76.4%  
LEP - 79.0%



### Unemployment

UK - 3.9%  
LEP - 3.9%

16-64 year old population = 742,600 Total  
population = 1,152,100

### Full-Time Salary



UK Average - £30,414  
LEP Average - £30,680

### Self-Employment



92,900 people in the region are  
self-employed

### Apprenticeships

There are approximately 330 live vacancies within a  
40 mile radius of Bristol, including...

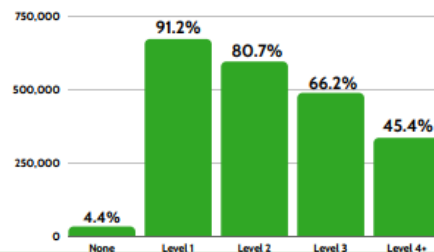
- Mental Health Support Worker
- Business and Administration
- Sports Coaching
- Vehicle Maintenance & Repair
- Accounting
- Dental Nursing
- Software Engineering
- Pharmacy Assistant
- Teaching Assistant
- Digital Marketing

Plus many more! Find local opportunities on  
[www.apprenticeships.gov.uk/](http://www.apprenticeships.gov.uk/)



### Qualification levels

594,200 people have at least a level 2 qualification such as  
GCSEs or an NVQ.



### Where do people work right now?

#### Most jobs

- Wholesale & Retail - 84,000 (14.2%)
- Health & Social Care - 83,000 (14%)
- Science & Technology - 55,000 (9.3%)
- Education - 55,000 (9.3%)
- Administration - 47,000 (7.9%)

#### Fewest jobs

- Arts & Entertainment - 14,000 (2.4%)
- Real Estate - 10,000 (1.7%)
- Water, Sewerage & Waste - 7,000 (1.2%)
- Electricity, Gas & Air - 2,500 (0.4%)
- Mining, Quarrying & Utilities - 225 (0.03%)

#### Growth Sectors

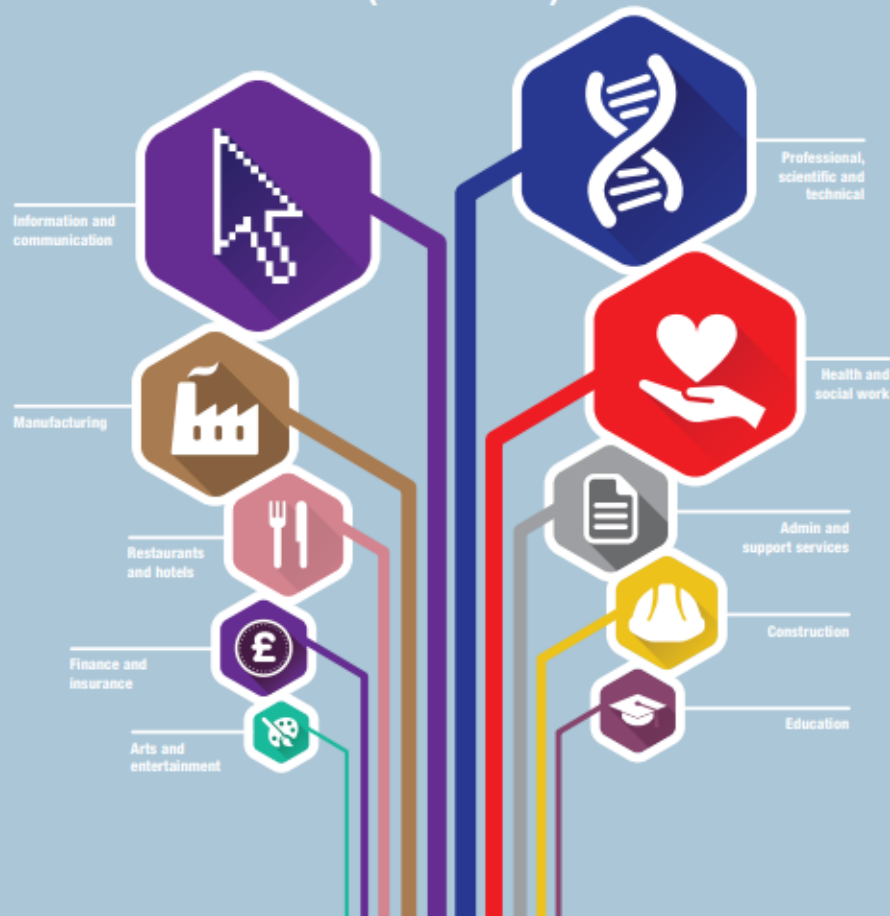
- Aerospace
- Care Workers
- Health and Social Care
- Transport
- Professional & Finance

There are many other sectors that will grow in your region



# EMPLOYMENT PROJECTIONS

Top 10 growth sectors  
(2018-2028)

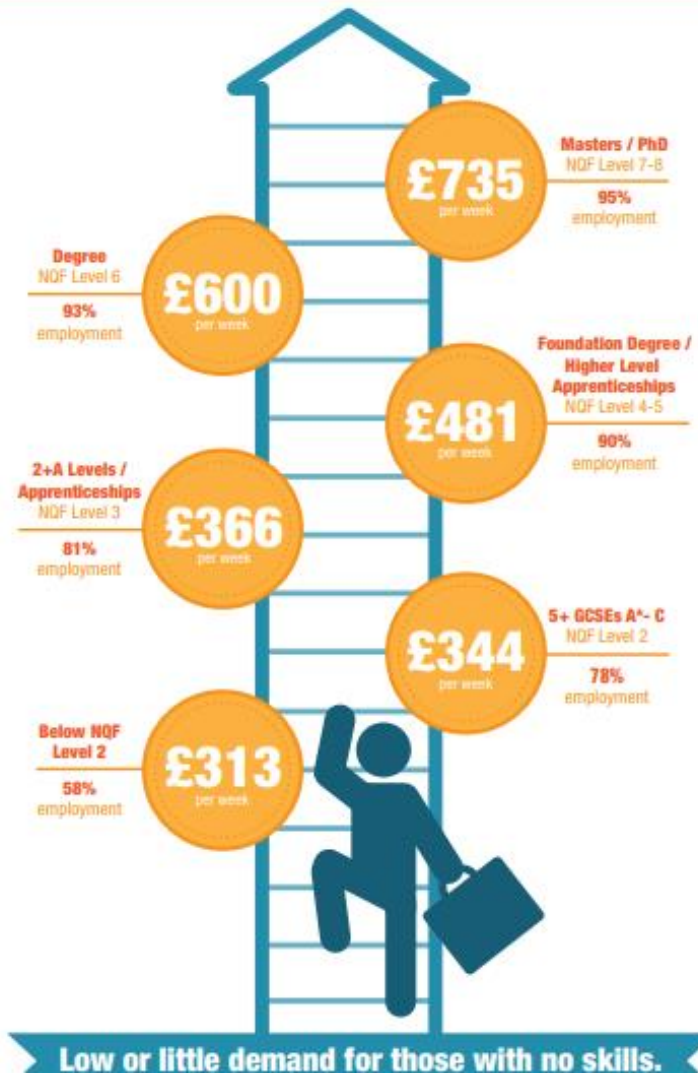




# IMPORTANCE OF SKILLS

The more you learn the more you earn

By continuing into further and higher level education you can greatly increase your earnings potential and employment prospects.



# SUBJECTS IN DEMAND

STEM related subjects will be in most demand reflecting the anticipated growth in the ICT, professional services and advanced manufacturing sectors. STEM qualifications will also be demanded by a wider range of sectors across the economy.

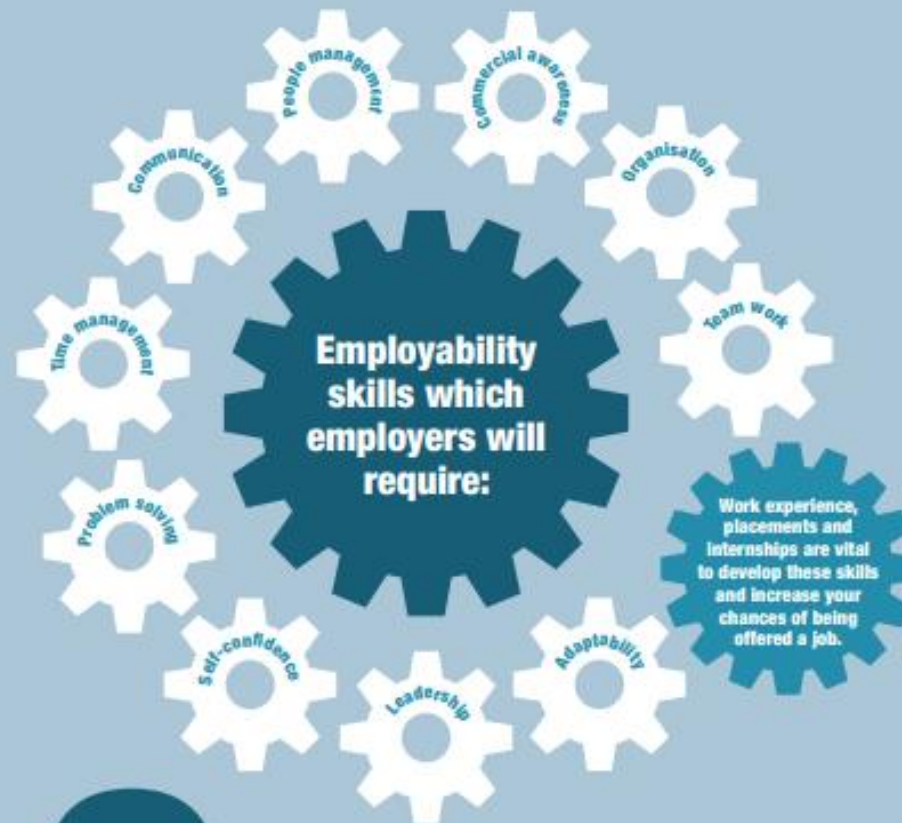
## More people needed with degrees in:



## More people needed with foundation degree level / higher level apprenticeships in:



## Wider employability skills are essential to securing employment



**Relevant work experience is one of the most important factors looked for in job applicants by employers**



# What Now?

**Any questions!**

