

Chew Valley School

Learn

Grow

Achieve

UNIFORM BROCHURE

“Wearing the school uniform creates a sense of identity, pride and equality”



School Uniform Permitted Items

It is the wish of the majority of parents and teachers that our students should be dressed smartly and in such a way as to be identifiable members of Chew Valley School. The smart appearance of our students is a sign that the school is a place of work for students and staff. We are conscious of the very high cost of traditional school uniform and the high cost of providing non-uniform clothes. We are anxious, therefore, to have guidelines for school clothing that are sensible, practical and economical.

These factors have been borne in mind when deciding on the school uniform list below and it is, therefore, hoped and expected that all parents will endeavour to ensure we achieve good standards of dress and tidiness, worthy of our school.

The Governors are keen to ensure that students wear the correct uniform and that high standards of dress are maintained. They will give their full support to staff in their efforts to enforce the governors' uniform regulations.



Bottle green v-necked jumper with school crest embroidered, can be worn all year round.

Fashion tops (leather jackets, tracksuit tops, knitwear or hoodies) must not be substituted for school jumper. No hoodies are allowed in school.



School House ties to be worn all year round, tied correctly.

Students will be expected to wear their House tie with a tucked in white shirt if they are not wearing the school jumper.



Plain white tailored long-sleeved buttoned up into collar, worn tucked into trousers. Long sleeved shirts can be worn all year round.

NO t-shirts are allowed to be worn under school shirts.



Plain white short-sleeved shirts only to be worn in the Summer terms, tucked into trousers.

NO t-shirts are allowed to be worn under school shirts.



Plain black tailored trousers. **NO jeans, denims, corduroy patterns, 'tight fit' styles, shorts or cropped trousers.** Plain black socks are the preferred option to be worn with trousers.



Plain black skirt and an appropriate length for the school environment. Plain black or natural coloured tights may be worn with these skirts.

Shorts must be grey in colour. The shorts must be of a material equivalent to school trousers. This means shorts will not be any other style, such as chino shorts or sports shorts. They should not contain any branding. This is explained further in the appendix.



Plain black flat shoes – **NO trainers or 'skate' shoe styles, boots, ballet pumps, canvas (including hi-tops) or backless shoes.** They must be all black, with no branding/logos, leather/leather look, durable and fitted. All shoes should adequately cover the foot for safety reasons. These are only two examples of styles that can be worn, please refer to pages 7 and 8 for a more detailed list of permitted and prohibited shoes.

Our expectation is that shoes are smart and offer protection against bad weather and falls. They also conform to health and safety standards for school use. We have stipulated that logos are not allowed as this puts pressure on other students to purchase expensive footwear.

However, Clarks and other leading brands have school shoes which could be classed as trainers (and contain logos) e.g.



In a bid to work with our parents/carers who may have been used to purchasing these or similar shoes at primary school, we feel an acceptance of this type of footwear is necessary. Obviously, some of the sports brands have moved into this area and we try to be clear with students and parents/carers that footwear needs to match the criteria above i.e. footwear should be all black, smart and offer protection and conform to health and safety standards. Some black, leather trainers meet these standards and are, in some circumstances a lot smarter and offer more protection than some of the shoes we see, as the photos following show:



The latter example in the three given above is the most controversial because of the logo but the three Adidas stripes are clearly visible on the first example so we have said yes to this shoe (minus the silver tag) because it does fall into our criteria.

We appreciate that for some, footwear is the trickiest area you have to deal with as shoes/trainers are expensive and children will try to convince you that the shoes they want definitely match the criteria! Therefore, if you are in any doubt, go with the simple rule our Heads of House will enforce - If the shoe is a material other than leather (or leather equivalent), has any colour except black on it and/or it contains a visible air bubble.....it does not meet the criteria. If you want further clarity, send an image of the shoe to myself or your child's respective Head of House via enquiries@chewvalleyschool.co.uk prior to purchasing and we will give you a clear "yes/no" answer.

Outdoor Coat

No uniform coat is prescribed, but should be predominantly one colour (black, grey or navy is preferred.) They should be plain in style and not made from denim or leather material. Coats may be worn as additional items of clothing – not instead of the school jumper. Hoodies are not to be worn under any circumstances.

Make Up

Discreet make up may be worn.

Jewellery

No jewellery is to be worn other than watches. Smart watches can be worn, but without the functionality of being linked to mobile devices. There must be no more than one studded earring in each ear and no other piercings are allowed.

Nails

Nails must be natural and not false. Nails should not be coloured with nail varnish and be of appropriate length.

Hair styles

Extreme hair styles and colours are not allowed. If you are unsure, please contact the Head of House for your child prior to making any decision about a haircut that might go against our expectations.

Non Compliance

The Headteacher will enforce the Governors' policy on uniform and appearance. The in-school response to uniform issues can be found in the appendix to this document.

Physical Education and Extra Curricular kit Permitted Items

Students must bring the full, correct kit to every PE lesson and be prepared to participate in the lesson to the best of their ability. In cases of injury/illness, where a student may not be able to fulfil their role as a performer they will be expected to assist in the lesson with alternative activities such as officiating, coaching and leading.

Kit

House Polo shirt (v-neck or buttoned), black with School Crest and House colour side panel.*



Plain black shorts, skorts, sports leggings or tracksuit bottoms.



Long green with black trim socks for hockey, football and rugby.



House sweatshirt, black with school crest with House colour side panel.*



OR

Green Rugby/Football shirt with school crest (black reverse).* Please note that if your child wishes to do rugby or football in lessons and for the school team this item should be chosen over the sweatshirt



<p>Trainers</p> <p>These should be sports trainers and not those worn as school shoes.</p>	<p>Football/Rugby Boots</p> <p>Not required for Year 7 PE lesson but will be needed if your child wishes to play rugby or football for the school and from Year 8 onwards where they have chosen football or rugby as part of their curriculum.</p>
---	--

*Tops can to be embroidered with surname. Rugby shirt can to be embroidered on green playing side.

Protective equipment such as shin pads and gum shields are recommended for some activities e.g. Hockey, Rugby and Football.

Please ensure that all items of uniform are clearly marked with your name and tutor group.

Where can I purchase the new uniform?

All items in this brochure that carry the school crest and school ties should be bought from South West Schoolwear, 23 Broad Street, Wells, Somerset, BA5 2DJ www.swschoolwear.co.uk with which Chew Valley School has a direct purchase agreement.

Please note that Chew Valley School does not sell any uniform items. All purchasing is completed outside the School.

If purchasing some items from other suppliers/retailers (e.g. trousers), please follow the guidance contained within this booklet. Prohibited items will be enforced. We appreciate your support in maintaining the highest standards of uniform.

Examples of Permitted Shoes

Examples of shoes that are acceptable and suitable to wear with the school uniform.

These shoes are smart and offer protection against bad weather and spillages. They also conform to health and safety standards for general school use.

Please note: Black soled trainers are not permitted for PE and students are expected to wear shoes rather than boots.



Examples of Prohibited Shoes

Examples of shoes that are unacceptable styles and must not be worn. However, please note that as fashions change quickly, this gallery may not show all pictures of prohibited items.

Inappropriate footwear relates to black or dark trainers with logos, thin ballet pumps and canvas daps or boots. Logos are not allowed as this puts pressure on other students to purchase expensive footwear.

They are impractical for school use as they get easily spoiled by wet weather and other spillages. They can also fall off students' feet when worn. They do not conform to basic health and safety standards.

**Girls'
Shoes**



**Boys'
Shoes**



Examples of Permitted Trousers/Skirts



Boot Legged Trousers



Straight Legged Trousers



Plain black school skirts are only allowed – but the following styles are acceptable:

- Pleated
- Tube
- Pencil
- Skater
- Longer styles

Examples of Prohibited Trousers/Skirts

The following items are an indicative gallery of prohibited items. They are not appropriate for school wear and must not be worn.

As fashions change quickly, this gallery may not show all pictures of prohibited items. To be sure that you are purchasing appropriate school wear, please follow the guidance on page 2 for permitted school uniform items.



Jeans



Leggings/Jeggings



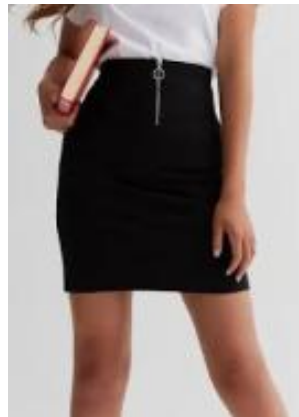
**Harem/
Baggy
Trousers**



Chinos/Jeans



Sports leggings



**Skirts that are considered to be too short
will be challenged**

Acceptable Short Styles

Shorts must be grey in colour. The shorts must be of a material equivalent to school trousers. This means shorts will not be any other style, such as chino shorts or sports shorts. They should not contain any branding and should be ideally purchased from an affordable retailer. We are aware that school shorts become slightly more difficult to buy for boys, but have included links that do cater for over the age of 14.

The following links are examples of shorts from affordable retailers that are appropriate within the description above:

[M&S Grey Shorts - Boys](#)

[M&S Grey Shorts - Girls \(up to age 16\)](#)

[M&S Grey Shorts - Girls \(up to age 16\)](#)

[Next Grey Shorts - Boys](#)

[Next Grey Shorts - Girls](#)

[Sainsbury's Grey Shorts – Boys](#)

[John Lewis Grey Shorts - Girls](#)

[Asda Grey Shorts - Boys](#)

[Asda Grey Shorts - Girls](#)

[Amazon Grey Shorts - Boys \(up to age 16\)](#)

[School Uniform 247 Grey Shorts - \(up to age 16\)](#)





Chew Valley School

Learn

Grow

Achieve

Chew Lane, Chew Magna, Bristol, BS40 8QB

www.chewvalleyschool.co.uk

01275 332272