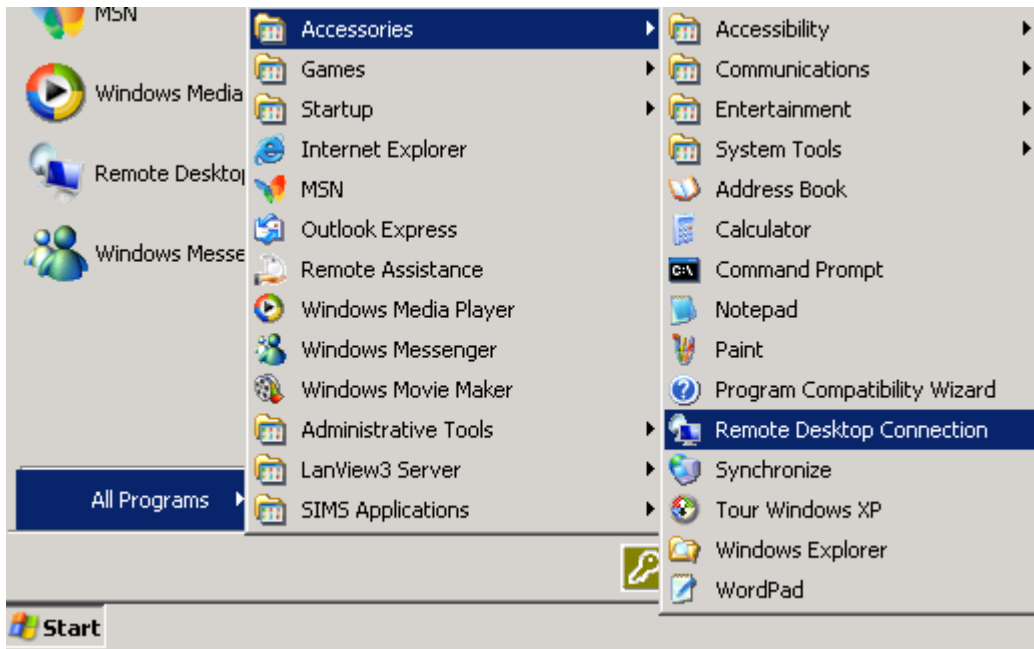


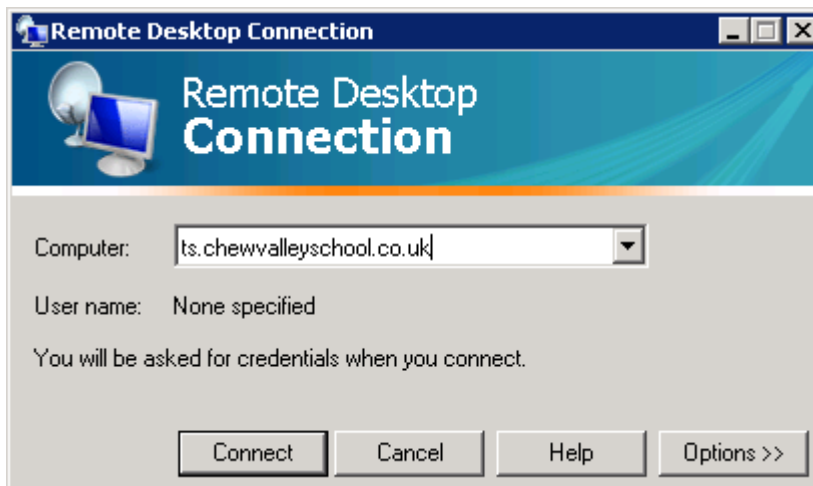
Accessing Terminal Services (Windows XP)

(1) Run Remote Desktop Connection

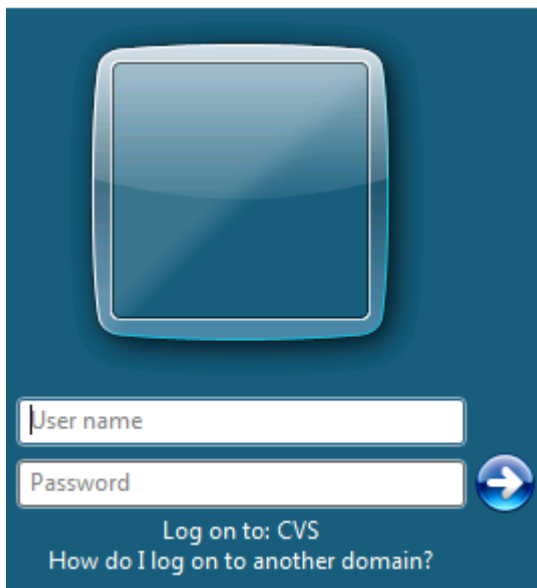
Start Menu -> All Programs -> Accessories -> Remote Desktop Connection



(2) Type the computer name, ts.chewvalleyschool.co.uk and left click connect.



(3) You will be presented with the logon screen shown below, logon using your school network username and password. Click the right arrow or press enter to logon.



(4) Once you have finished, click log off.

