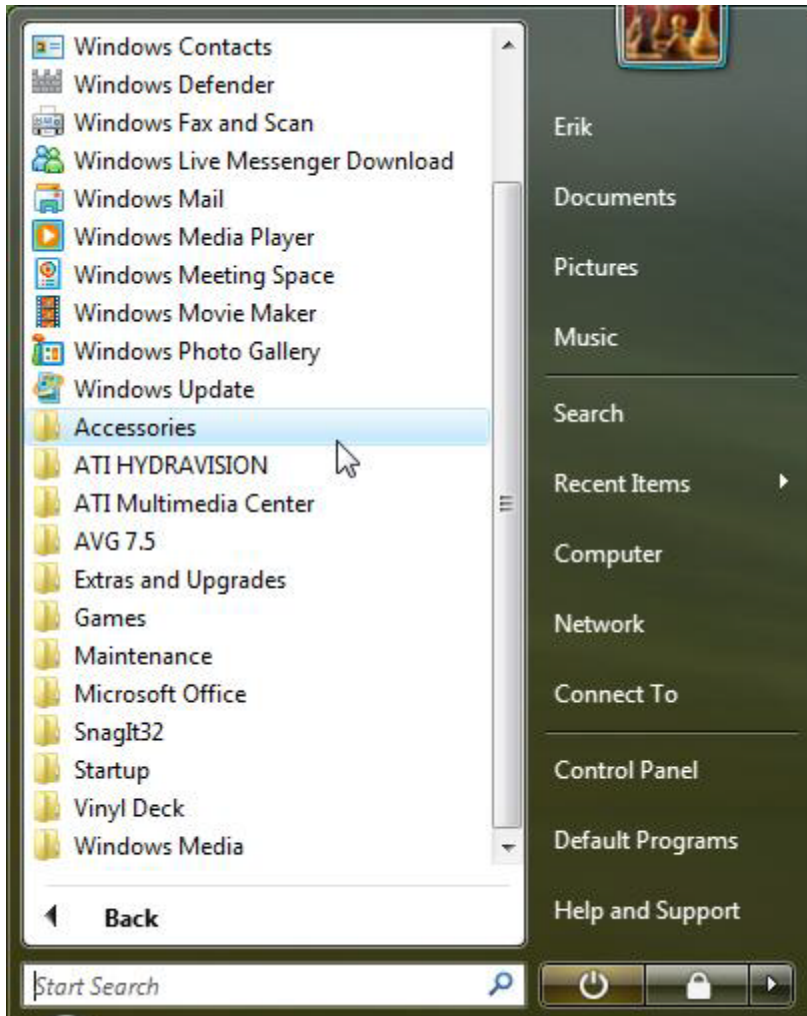


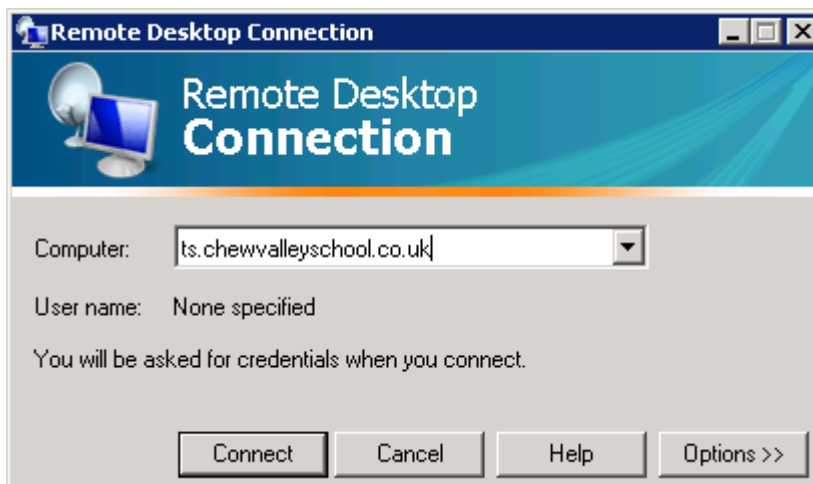
Accessing Terminal Services (Windows Vista)

(1) Run Remote Desktop Connection

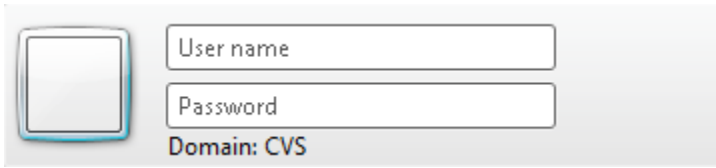
Start Menu -> All Programs -> Accessories -> Remote Desktop Connection



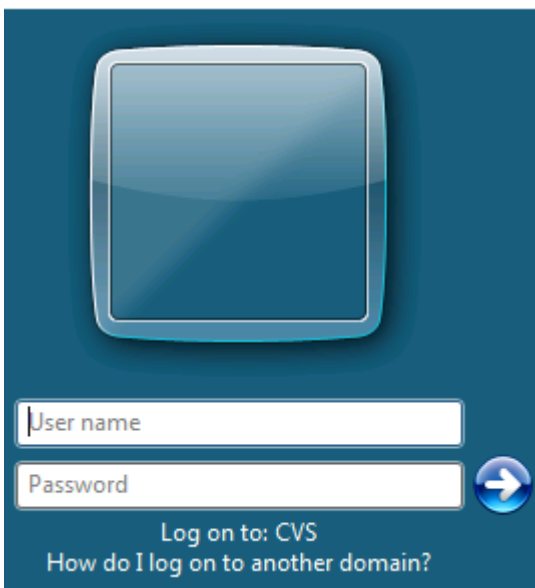
(2) Type the computer name, ts.chewvalleyschool.co.uk and left click connect.



(3) You may be presented with the screen shown below. Enter your network username preceded by CVS\ for example the username jbloggs would become CVS\jbloggs, you password remains the same, then click ok.



(4) You will be presented with the logon screen shown below, logon using your school network username and password (CVS\ is not needed) . Click the right arrow or press enter to logon.



(4) Once you have finished, click log off.

