

CHEW VALLEY SCHOOL

A Performing Arts College



Developing Potential to the Full



Welcome

We hope that parents and prospective pupils will find Chew Valley School a welcoming environment. We are an ambitious, successful, vibrant and caring community. I hope that these pages will give you a flavour of what the school is like but I would also like to invite you to visit us to see for yourself.

Our school is founded on a commitment to enable all our students to fulfil their potential. We take seriously our obligation to prepare young people to take their place in a world where results, character and personal integrity matter.

The school takes great pride in its students and their many achievements. We are determined to provide for them an environment that is stimulating and supportive, academically stretching and rich in extra-curricular opportunity. Our aim is to stimulate in all our students a love of learning and a respect for achievement.

Relationships matter at Chew Valley School: between teachers and students and between the school and parents. We look forward to working with you and your children to enable them to develop their potential to the full.

A handwritten signature in black ink that reads "Mark Mallett". The signature is written in a cursive style with a horizontal line underneath the name.

Mark Mallett
Headteacher

About our school

The school is situated in the Somerset countryside eight miles south of Bristol between the villages of Chew Magna and Chew Stoke. Most students at the school come from the 120 square miles of the Chew Valley. Overlooking Chew Valley Lake our 30 acre site provides pleasant grounds, landscaped gardens and extensive playing fields and tennis courts.

The school has a well-maintained range of buildings providing specialist teaching rooms for all subjects. ICT facilities are well developed and our new science labs are equipped with state of the art technology.

Our success in achieving Arts College status has brought new facilities for drama and music. A lottery grant has enabled us to build a new gymnasium and an all-weather pitch for school and community use. In 2009 we opened our spacious new Sixth Form and Community Building.

At around 1000 students in the main school and 200 in the Sixth Form Chew Valley School is a middle sized secondary school. We believe that we are able to offer our students the facilities and opportunities of a large school on a scale that seems smaller and more personal.

LEARNING AND ACHIEVING



Chew Valley School is committed to providing our young people with an education that is exciting, relevant and stretching.

The curriculum at Key Stage 3 (Years 7-9) is a broad one allowing students to find their strengths in a large range of subjects and disciplines. As well as the core subjects, including English, Maths and Science, all students study one foreign language in Year 7 and many will add a second foreign language in Year 8. Students will have lessons in Music, Art and Drama. They will also have specialist teaching in Technology and ICT. It's about getting a grounding in the big picture of learning and beginning to decide what to take to a deeper level later on.

At Key Stage 4 (Years 10-11) we still encourage most students to maintain a balance and breadth in their studies. Most of our students choose to continue their foreign language and humanities subjects to give themselves access to the English Baccalaureate. For others the time has come to begin to specialise, and we offer a range of applied subjects including Sport, Construction and Health and Social Care.

Most of our students opt to stay at Chew for their Post-16 education. The Sixth Form presents a choice of more than 30 different courses providing access to wide range of Further Education opportunities. The Sixth Form was deemed to be 'outstanding' by Ofsted in 2008.

“The curriculum is outstanding and includes an extensive range of enrichment activities that students appreciate greatly.”

Ofsted 2008



Learning thrives outside the classroom too. We are proud of the great range of extra-curricular opportunities available to our students. The choice stretches from school drama productions to a myriad of sports, hobbies and pursuits.

The school is committed to nurturing the talents of every one of its students. We do, however, recognise that some students are especially talented in one area in particular, such as sports or music, and that other children may have outstanding academic gifts across a wide range of subjects. To create the appropriate environment for these students Chew Valley School provides a stretching experience in the classroom and offers a wide range of additional enrichments and support. We challenge all students to achieve their potential.

CARING FOR OUR STUDENTS

We are a genuinely caring community and the happiness and success of our young people matters enormously to us.

Each year group is supported by a Head of Year and team of tutors. They take responsibility for the academic progress of their students and for addressing issues of behaviour and social development. When problems arise we address them quickly and year after year our surveys show that our students feel supported and happy in the school.

We are proud of the high standards of behaviour, effort and achievement at Chew Valley School and make every effort to reward our young people for their successes. House points are awarded to students as recognition of good work, progress or service to the school. Students also receive commendations for outstanding work or achievement.

As a comprehensive school our intake will comprise pupils of all levels of ability and needs. We have pupils with exceptional skills and aptitudes and pupils who experience a range of special educational needs, be they physical, medical or learning difficulties. We value all our pupils and try to address each individual's needs as positively and effectively as we can.

Pupils with Special Educational Needs will be supported either within the mainstream classes by the use of additional teachers or Learning Support Assistants, or by being withdrawn from some lessons to follow specific, individual programmes of study. Their progress is carefully monitored and communicated to parents on a regular basis.

“The personal care and guidance students receive are exceptional.”

Ofsted 2008



“In this outstanding sixth form, students flourish in many ways, academically and personally.”

Ofsted 2008

WORKING WITH PARENTS



Parents' involvement in their children's education is the absolutely essential factor in success at school.

At Chew Valley we greatly value the home-school partnership that exists between us.

We recognise that the secondary school can seem less accessible and open than primaries. To address this concern we have a full-time Home School Liaison Officer available to respond to parents' queries and concerns or direct them to the person who can help.

We keep parents fully up to date on their child's progress with frequent interim reports, a full annual report and subject teacher/parent consultation evenings. In addition to this, every week will see a number of meetings between teachers and parents to discuss concerns and identify solutions.

The Chew Valley School Society is a thriving parent/teacher body which raises thousands of pounds every year to enrich our facilities and equipment. As well as fundraising, the School Society provides a lively social programme to bring families into the school community.

“The school works extremely well to ensure that any barriers to learning experienced by students are recognised and removed as far as possible, through the support work in Lake View House and from heads of year.”

Ofsted 2008

SPORT AT CHEW VALLEY SCHOOL

The Physical Education curriculum provides opportunities for young people to learn and involve themselves in a great variety of sports in order to establish healthy habits and attitudes to exercise for life.

We compete with other schools in athletics, rugby, football, hockey, netball, cricket, tennis, golf and rounders and offer one of the widest menus of extra-curricular opportunities available anywhere.

Although we are successful and competitive we are not elitist. Very large numbers of students attend practices and we vary our teams and provide opportunities for all who are committed to the squad to compete.

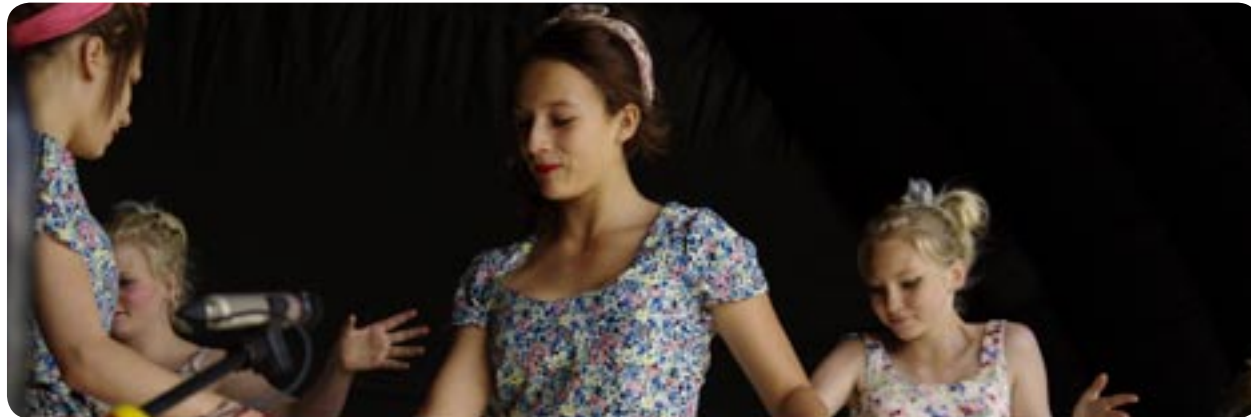
We have long established links with local clubs in football, netball, hockey, rugby and tennis and are sailing champions in the region.

In recent years we have enjoyed success at national, county and district competitions in cheerleading where we have been national champions. As a Performing Arts College dance is also a strong part of the curriculum.

Sport offers many opportunities for developing leadership skills and all pupils are encouraged to participate in the Junior Sports Leadership Award as they progress through the school.



THE ARTS AT CHEW VALLEY SCHOOL



The school became a Specialist School in the Performing Arts in 2003.

We believe that the creative and performing arts make a unique contribution to the education of young people. Since designation as a Specialist School in the Performing Arts, growing numbers of young people have been discovering the value of the arts in their lives. Productions are put on each term, there is an annual dance festival and concerts, cabarets and musical extravaganzas illuminate the school year. 250 pupils are currently registered for peripatetic music lessons in the school and many others have tuition privately.

When we wrote our plan for how specialist school status would help us develop we called it 'Learning to Perform'. The self-discipline and self-esteem that young people achieve when they learn to act, dance or play an instrument will be crucial skills and qualities for success in their wider studies and their adult lives.

We have defined our arts status as being about creativity in the broadest sense and have been able to fund exciting and enriching experiences in all subjects and curriculum areas. We are determined that our students become active learners, able to think and act for themselves.

“The school’s specialism in the performing arts has a palpably strong impact on school life and students’ enthusiasm for it.”

Ofsted 2008



OUTDOOR EDUCATION

Outdoor education is one of our passions at Chew Valley. The opportunities are unrivalled.

Students at Chew Valley are able to take part in the legendary Ten Tors, a trek on Dartmoor of up to 55 miles which is run by the army each May. About a quarter of our Year 10 and Year 11 undertake the Duke of Edinburgh Award which involves community service, developing skills and fitness and taking part in a 20 mile expedition. Our staff give up their weekends throughout the year to help students train and prepare for expeditions. It is a touchstone for the community nature of our school.

We have a rich tradition of overseas visits too. The Languages Faculty has long established residential visits and exchanges to Normandy, Paris, Barcelona, Berlin and Bavaria. Sixth Formers can undertake work experience in mainland Europe and the History and Geography Departments run Sixth Form visits to Washington DC and Costa Rica to support students' studies at A Level. We have offered students the opportunity to embark upon month long expeditions to both China and the Himalayas.

In recent years we have twinned with a school in Zambia and have exchanged teachers and developed opportunities for our students to visit Zambia we have also sent groups of students to South Africa and Honduras. We have a commitment to international citizenship and hope that all the students at the school benefit from the global dimension that these visits and experiences add to our curriculum.



“The school is rightly proud of the work undertaken to boost creativity and to develop students as leaders and contributors in a cohesive and supportive society.”

Ofsted 2008

THE COMMUNITY & BEYOND



Chew Valley School is a resource for the whole community.

We are a partner with Norton Radstock College for providing Adult Education opportunities. The Chew Valley Leisure Centre is open all the year round and boasts thousands of visitors. Our Community Arts programme provides opportunities for people at every age and stage. The Chew Valley Family Centre is based at the school and we have our own base for outside agencies to support our families and students at Lake View House.

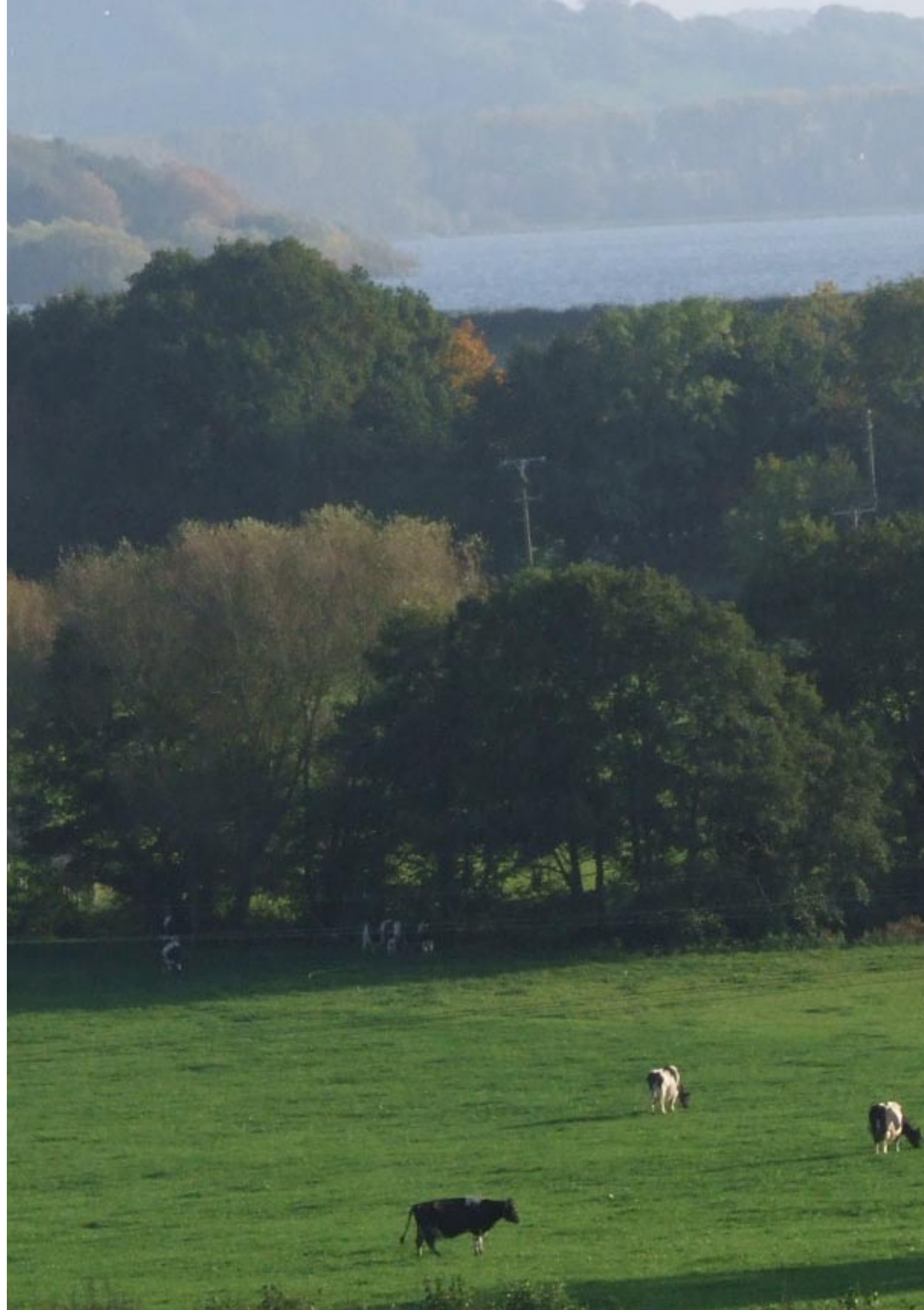
One of the most exciting developments in recent years has been the transformation of our school council. It has gone from being a small consultative body to an organisation of more than a hundred students working in teams with real power and responsibility. We call it the Learning to Lead initiative and it's all about young people working with the support of adults to develop their skills while improving our school. Our wind turbine, memorial garden and healthy school menus are evidence of the impact that they are having.

For our young people, our aim is to develop a passion for learning which will be a source of interest and joy throughout their lives. Our alumni have won success in every sector and profession. A Chew Valley education is a preparation for life.



“Students grow as confident, courteous and considerate young people whose contribution to school life is extensive, as demonstrated by the highly developed and influential school councils.”

Ofsted 2008





Chew Valley School
Chew Magna
Bristol
BS40 8QB

Telephone: 01275 332272 Fax: 01275 333625

Email: enquiries@chewvalleyschool.co.uk

www.chewvalleyschool.co.uk

© Chew Valley School